

FLEX-FLOW™

Next-Generation Adjustable Port Valve

Flex Flow's innovative, cost-effective design sets a new standard for variable port valves. Built for durability, it performs reliably in the **toughest** environments. The adjustable port delivers precise flow control, while the robust shaft and universal mounting pad ensure quick, easy installation with a variety of actuators.



PERFORMANCE BENEFITS

- Maintenance-free operation
- Linear flow curve from full-open to full-closed
- Compatible with any actuator – linkage or direct-mount
- Available in sizes from ½" to 4"
- Hydrogen and oxygen compatible

OPERATIONAL FLEXIBILITY

- Available with socket-weld, threaded, or flanged connections
- Available in carbon steel or stainless steel construction
- Machined from solid stock – higher quality and lower lead times
- Cost-effective and simple installation
- Custom mounting brackets and couplings available upon request

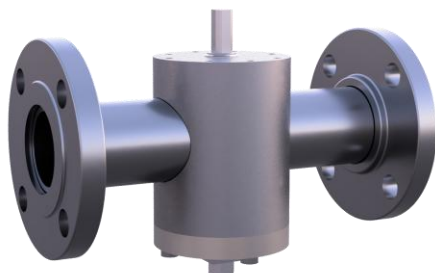




Socket-weld configuration

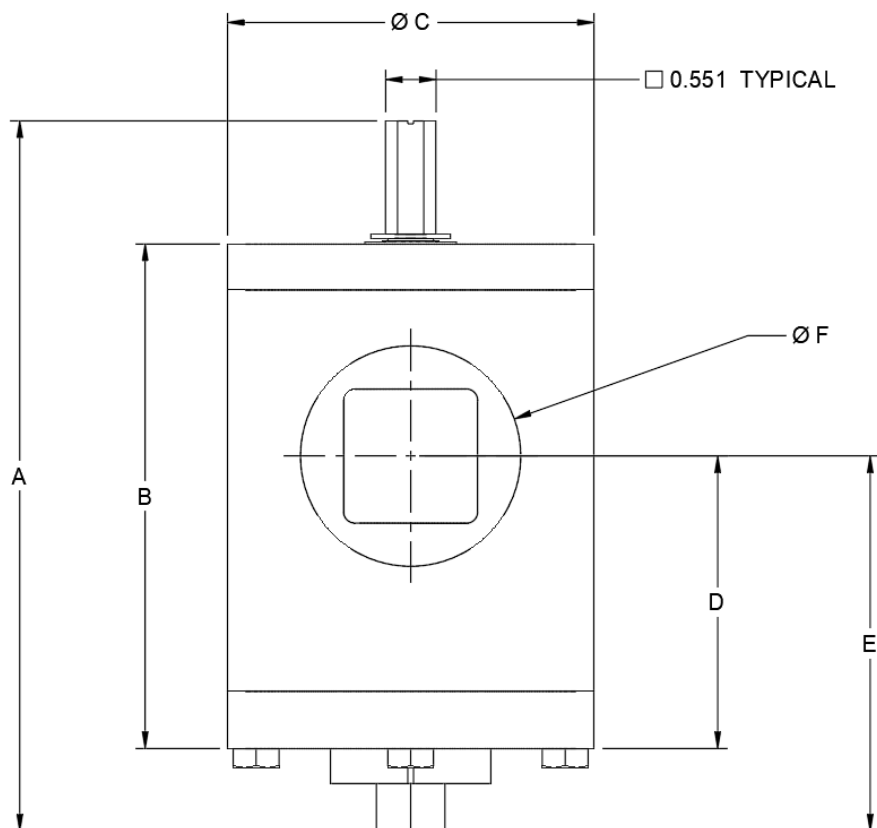


Threaded configuration



Flanged configuration

Custom spool sizes available upon request



	A	B	ØC	D	E	ØF
0.5"	6	3.83	3	2.24	3.14	0.84
0.75"	6.86	4.64	4	2.56	3.46	1.08
1"	7.05	4.83	4	2.74	3.65	1.35
1.25"	7.05	4.83	4	2.77	3.65	1.70
1.5"	7.34	5.11	4	3.03	3.94	1.93
2"	7.72	5.50	4	3.19	4.10	2.41
2.5"	7.72	5.50	4	3.19	4.10	2.91
3"	8.99	6.77	5	3.99	4.90	3.53
4"	10.52	8.31	6.5	5.01	5.92	4.53

For More Information

To learn more about our products, visit ErtlCombustion.com or contact us at sales@ertlcombustion.com

ERTL Combustion
2316 Jefferson Street
Anderson, Indiana 46016

